

JISHUGAKUSHA

(Dormitory for international students)

run by MOTHERS AND STUDENTS' ASSOCIATION

It is located in a quiet environment of Higashimurayama City, Tokyo. About 30 students live an independent life here and commute to universities in Tokyo area.

"Get-together" is occasionally held (voluntary) to cultivate friendship among the student residents.

Dormitory Accommodations

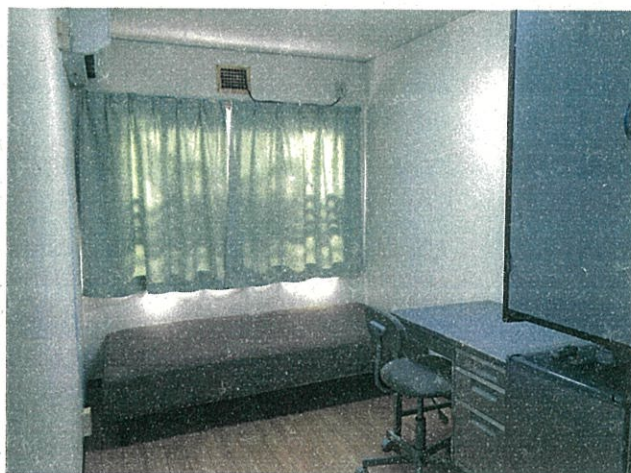
1. Each room facing south, about 5-tatami wide
2. Air-conditioning unit and refrigerator provided
3. Free Wi-Fi available
4. Cable TV line equipped in each room
5. Communal area: kitchen (equipped with cooking utensils, pans and dishes), dining room, shower-room, toilet, laundry machine.

Currently rooms
are available!

* Access *

SEIBU TAMAKO LINE: 7min walk from Yasaka station.

SEIBU KOKUBUNJI LINE: 10min walk from the west exit of Ogawa station



For any enquiry, please contact:

MOTHERS AND STUDENTS' ASSOCIATION

*Address: Postal code 189-0024, 1-7-2 Fujimi-cho, Higashimurayama City, Tokyo

*TEL: 042-393-8330 (Mon - Fri 10:30am - 4:30pm)

*Email: jishugakusha@palette.plala.or.jp

*URL: <https://hahagaku.or.jp/>